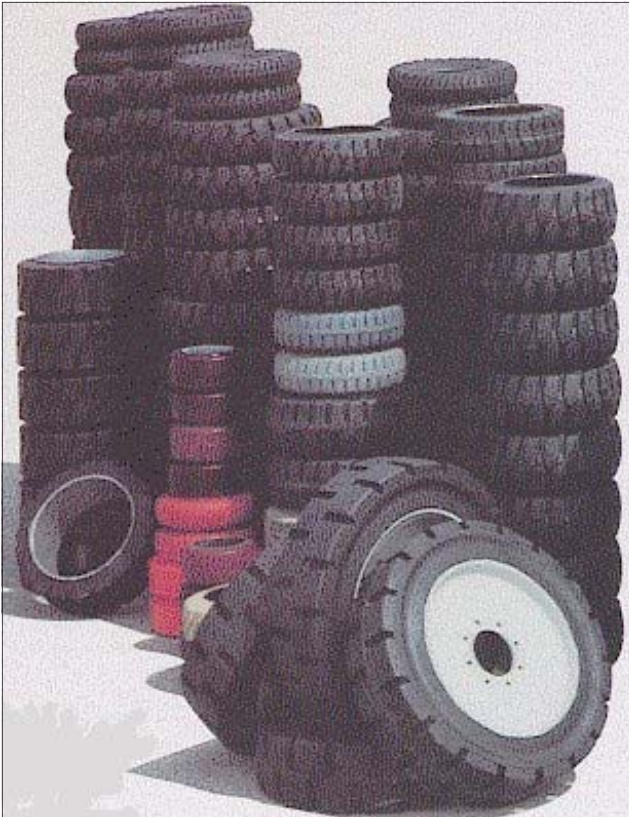


On-Site Tire Installation



TLM'S TIRE DEPARTMENT MAKES THE TASK OF PURCHASING, AND INSTALLING NEW TIRES ON YOUR LIFT TRUCK EASIER THAN EVER BEFORE. STANDARD SERVICES IN THE SEVEN COUNTY METRO AREA INCLUDE:

1. Single line item pricing, the price you're quoted is all you'll pay. No hidden charges! [tax not included]
2. Installation at your site with our self enclosed delivery system, to cause you as little disruption as possible
3. Disposal of your old tires
4. Inspection and lubrication of bearings (if found needed)
5. Fast installation, most trucks take less than one hour once on site. That will get your unit back in service quickly
6. Flexible schedule, we're willing to work with your needs.
7. We supply "**Solid-Deal AD-Trac**" tires, the best "all natural rubber" tire for better heat dissipation, and longer life. Are your tires a natural compound?

Your lift truck tires are your equipment's only shock absorber, quality tires from Toyota-Lift of Minnesota protect your

- Personnel
- Product
- Equipment

GET AHEAD OF COSTLY REPAIRS, LOST TIME, AND DAMAGED PRODUCT. CALL US TODAY AND ASK FOR A TIRE INSPECTION. WE'LL WORK TO INSURE THAT YOUR TIRES ARE DOING ALL THAT THEY ARE SUPPOSED TO BE.

"Tire inspections can be done at your location at no cost and with no commitment, call today!"

Complete Tire Provider

OUR COMMITMENT IS TO SUPPLY OUR CUSTOMERS WITH EVERY TIRE, AND TIRE RELATED NEED. TOYOTA-LIFT OF MINNESOTA IS YOUR "TOTAL-SOURCE" MATERIAL HANDLING PROVIDER.



**PRESS ON
CUSHIONS**



**RUGGED
SOLID-PNEUMATICS**



**NON-MARKING TIRES IN PRESS
ON AND SOLID-PNEUMATIC STYLE**



**ASK ABOUT OUR TIRE
CHAINS**

"SOLID-DEAL AD-TRAK'S natural rubber compounds offer low rolling resistance & low heat build up. Suitable for Electric & IC Trucks, trailers & support equipment. Full thickness steel bands offer greater protection to wheels." - Are your tires all natural rubber?