

6-Series

ELECTRIC WALKIE PALLET TRUCK

SPECIFICATIONS

6HBW20

Featuring metal oxide semiconductor field effect transistor (MOSFET) technology which offers programmable performance and unsurpassed reliability characteristics. Advanced, ergonomic curvilinear design helps enhance operator comfort and efficiency.

Standard Features

PERFORMANCE

- 4000 lb capacity
- 24 Volts
- 6 inch lift
- Solid state (transistor) drive motor controller utilizing MOSFET (Metal Oxide Semiconductor Field Effect Transistor) design
- Programmable performance
 - Adjustable main current limiting for control of travel speed
 - Adjustable plugging current limiting
 - Adjustable ramp start current limiting
 - Adjustable acceleration
 - Adjustable creep speed
 - Adjustable quick-start throttle factor
- Continuous fault detection
- Proportional plugging
- Lift limit switch
- Low voltage cutback
- Controller thermal protection
- Runaway protection
- Class 'H' motor insulation
- Horizontally mounted motor coupled directly to gear housing
- Oil immersed gears

- Single-unit lift pump, motor and reservoir
- Overload protection valve
- Single lift cylinder design
- Fused control and power circuits
- On/off key switch

BODY/EXTERIOR DESIGN

- Welded construction
- Internal-expanding shoe brake
- Pallet entry/exit skid plates
- Heavy-duty bumper
- One-piece polymer service access cover
- Rubber drive tire
- Polyurethane load wheels
- Stabilizers with replaceable polyurethane pads (reversible for extended life)
- 3.25 inch bumper clearance

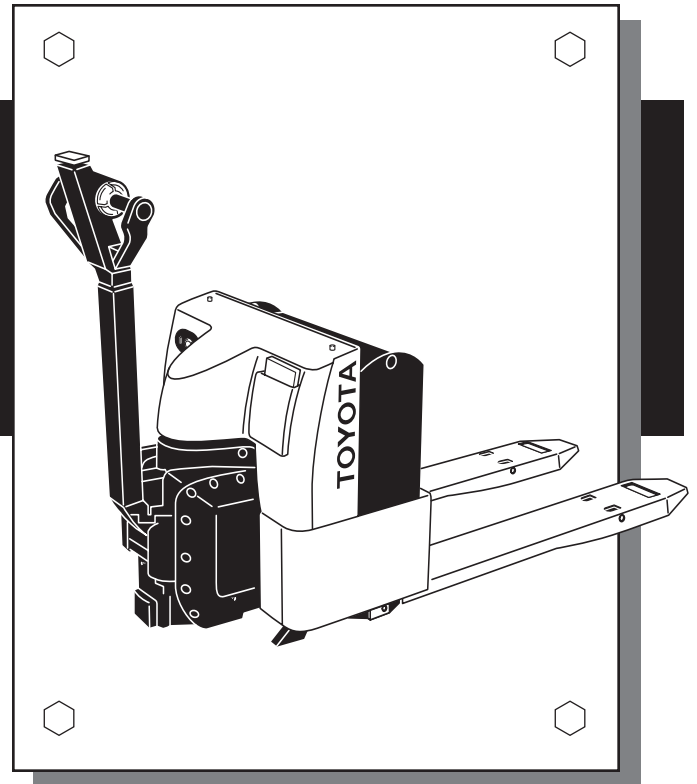
ERGONOMICS

- Dual twist grip with thumb wheels for direction control and travel speed
- Full width push buttons for lift, lower and horn functions on control handle
- Wraparound cast aluminum knuckle guard

- Direction reverse switch on control handle – reverses direction of travel should bar come in contact with operator
- Bottom mounted control arm

Optional Equipment

- Battery/charger pack
- Battery/charger pack with maintenance-free batteries
- Cold storage conditioning
- Combination battery discharge/ hour meter indicator
- Battery discharge indicator
- Hour meter
- 36, 42 or 48 inch fork lengths
- 22 or 27 inch overall fork widths
- Polyurethane drive tire
- Lubrication fittings located at pivot points
- 48 inch easily removable load backrest extension
- 60 inch easily removable load backrest extension



6HBW20 Specifications

EXTERIOR DIMENSIONS (inches)

A Fork Length	36	42	48
B Overall Length (Including Handle)	66.2	72.2	78.2
C Wheelbase – Lowered	47	53	59
D Wheelbase – Raised	42.75	48.75	54.75
E Turning Radius	51.7	57.7	63.7
F Overall Fork Width	22 or 27		

Gross Weight Without Batteries (lbs)	810	820	830
--------------------------------------	-----	-----	-----

BATTERY – 24 VOLT

Amps Max.	330
Battery Connector/Color	SB-175/Gray
Battery Connector Cable Location	B
Battery Connector Cable Length (inches)	12
Dimensions of Battery Compartment L x W (inches)	28.5 x 9
Battery Weight Max. (lbs)	660
Battery Weight Min. (lbs)	200

PERFORMANCE

Travel Speed (mph)	Full Load	2.4
	No Load	3.7
Gradeability %θ	Full Load	5

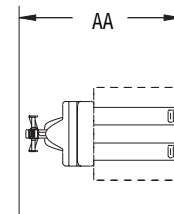
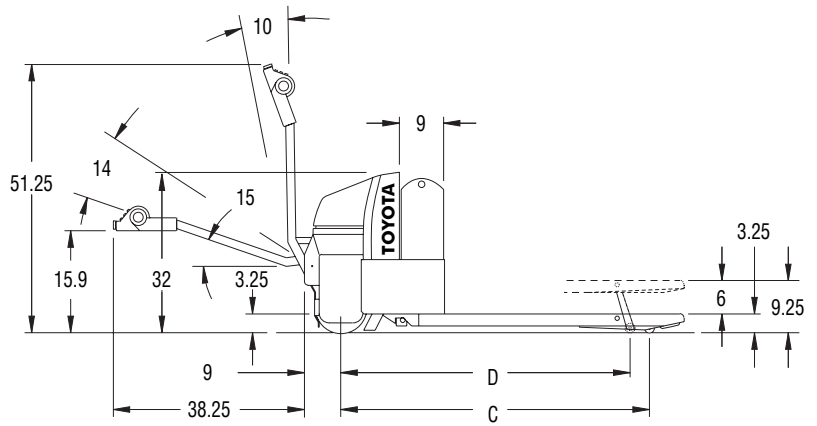
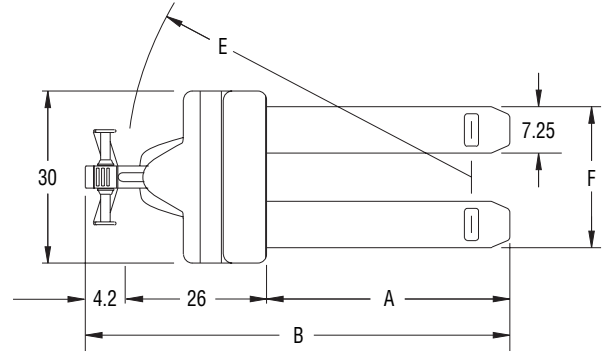
TIRES

Type	Drive	Rubber
	Load	Polyurethane
Size	Drive – Dia. x Width (inches)	10.5 x 5
	Load – Dia. x Width (inches)	3.25 x 5

AISLE REQUIREMENTS – RIGHT ANGLE STACKING (AA)

Pallet Width	Fork Length		
	36	42	48
36	62	68	73
40	62	68	73
42	62	68	73
48	62	68	73

Minimum Aisle Width for Right Angle Stacking.
Add a minimum of 12 inches for easy maneuvering.



Some product features described herein are optional. Please consult your dealer for specifications. Details of specifications and equipment are based on information available at time of printing and may change without notice.

00722-35127 05/05
Litho in U.S.A. (2.5M)

© 2005 Toyota Material Handling, U.S.A., Inc.
www.toyotaforklift.com



Toyota is the number one selling lift truck in the United States.