

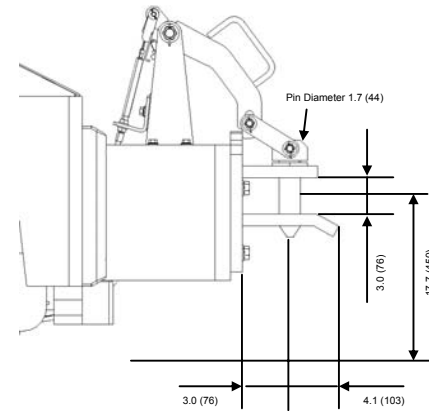
2TE18 Specifications

MAIN VEHICLE SPECIFICATIONS

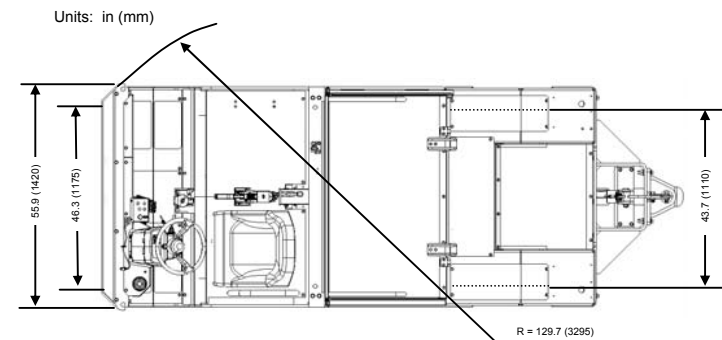
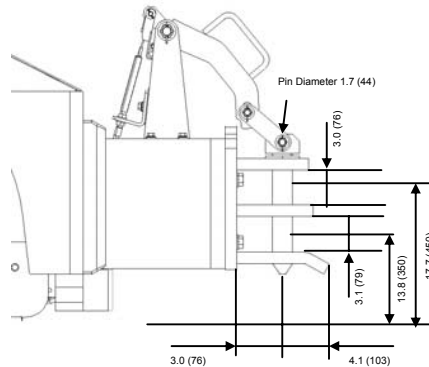
1	Manufacturer		TOYOTA
2	Model		2TE18
PERFORMANCE			
3	Travel Speed	No Load	mph (km/h) 17.5 (28)
4	Towed Weight	60-Minute Rating	lb (kg) 55100 (25000)
5	Maximum Drawbar Pull	3-Minute Rating	lb (kg) 4000 (1800)
6	Rated Drawbar Pull	60-Minute Rating	lb (kg) 1100 (500)
7	Gradeability		% (tanθ) 26
DIMENSIONS			
8	Overall Length	w/o Tow Hitch	in (mm) 133.7 (3395)
		w/ Tow Hitch	in (mm) 142.3 (3615)
9	Overall Width		in (mm) 55.9 (1420)
10	Overall Height	w/o Cab	in (mm) 50.4 (1280)
		w/ Cab	in (mm) 74.6 (1895)
11	Drawbar Height	Standard Drawbar	in (mm) 17.7 (450)
12	Turning Radius (Outside)		in (mm) 129.7 (3295)
13	Tire Size	Front	175R13-8PR (L.T.)
		Rear	28 x 8-15-12PR (I)
14	Wheelbase		in (mm) 63 (1600)
15	Tread	Front	in (mm) 46.3 (1175)
		Rear	in (mm) 43.7 (1100)
16	Underclearance		in (mm) 5.9 (150)
WEIGHTS			
17	Total Weight (w/o cabin)	w/o battery	lb (kg) 4960 (2250)
		w/ Std battery	lb (kg) 7495 (3400)
18	Weight Distribution (w/std battery)	Front	lb (kg) 3152 (1430)
		Rear	lb (kg) 4343 (1970)
POWERTRAIN			
19	Drive Motor		AC Motor
20	Drive Motor Output Rating	HP / kW	22.3 / 16.6
21	Control Type		Transistor Inverter
BATTERY INFORMATION			
22	Manufacturer		Exide
23	Type	min/max	40E85-11 / 40E110W-11
24	Voltage		V 80
25	Capacity	min/max	AH/6HR 425 / 550
BRAKE SYSTEM			
26	Brake Type	Front	Disc
		Rear	Drum
27	System Type		Tandem Hydraulic
28	Electronic Regen Braking		Yes
SUSPENSION			
29	Suspension Type	Front	Spring
		Rear	Rigid
STEERING SYSTEM			
30	Steering Type	(FHPS)	Full Hydraulic Power Steering

DRAWBAR

Single Stage Pin Type Drawbar (Standard)

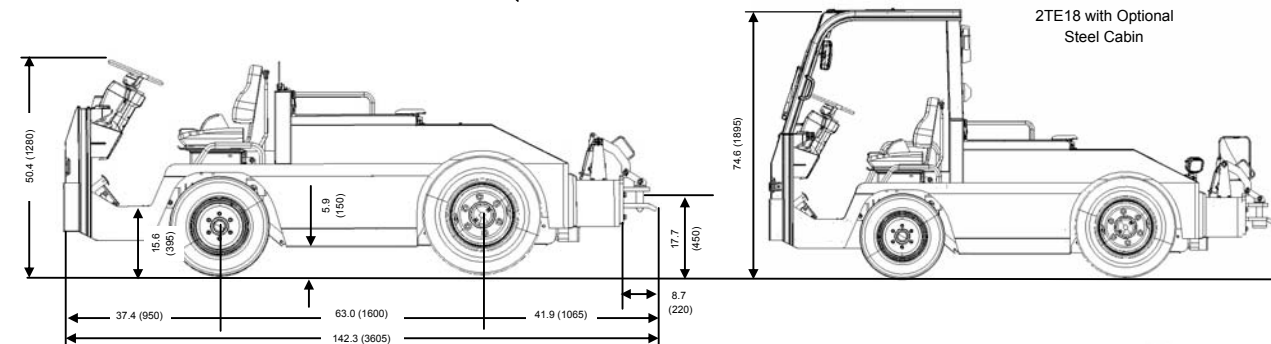


Double Stage Pin Type Drawbar (Option)



Ramp Degree	Ramp Grade	Level Start with One Trailer - lb (kg)	Start on Grade with One Trailer - lb (kg)
0°	0.0%	55,100 (25,000)	---
1°	1.7%	55,100 (25,000)	45,400 (20,600)
2°	3.4%	55,100 (25,000)	35,500 (16,100)
3°	5.2%	49,200 (22,300)	28,900 (13,100)
4°	6.9%	38,100 (17,300)	23,900 (10,800)
5°	8.7%	30,600 (13,900)	20,100 (9,100)
6°	10.5%	25,100 (11,400)	17,200 (7,800)
7°	12.2%	21,200 (9,600)	14,800 (6,700)
8°	14.0%	18,100 (8,200)	12,800 (5,800)
9°	15.8%	15,400 (7,000)	11,200 (5,100)
10°	17.6%	13,400 (6,100)	9,700 (4,400)

Based on dry even concrete (Coefficient of Rolling Resistance = 0.02)
Towed weight data is the same for two or more trailers



Some product features described herein are optional. Please consult your dealer for specifications. Details of specifications and equipment are based on information available at time of printing and may change without notice.

© 2007 Toyota Material Handling, U.S.A. Inc. (3/07)

2TE15/18

-SPECIFICATIONS-



3,300 – 4,000 lbs Drawbar Pull

PERFORMANCE

- 80 Volt AC Drive System
- 44,100lb/55,100lb Towing Capacity (2TE15.18)
- 15.6/17.5 MPH Lo Load Travel Speed (2TE15.18)
- Anti-Roll Back Function
- Front Disc Rear Drum Hydraulic Brakes
- Hydraulic Power Steering
- 2-Speed Travel Speed Control
- Power Select Function
- Multi-Function Display with Hour Battery, & Trip Meters
- On Board Diagnostic and Warning System
- Automatic Regenerative Braking
- UL-Approved Model Type E ⁽¹⁾

ERGONOMICS

- Infinitely Adjustable Tilt Steering Wheel
- Operator Presence Sensing System (OPSS)
- Enhanced Visibility of the Rear Hitch
- Parking Brake Alarm
- Double Action Parking Brake
- Column Mounted Display & Direction Control
- Low Entry Step Height
- Drivers Side Grab Bar
- Heavy Duty Vinyl Seat

BODY/EXTERIOR DESIGN

- Heavy Gauge Steel Construction
- DC-DC Converter
- Rear Single stage Pin Type Hitch with Remote Release
- Emergency Power Disconnect
- Electric Horn
- Easy Access Service Compartments
- Tight Turning Radius
- Small Diameter Steering Wheel

OPTIONS

- Steel Cabin with Door
- Steel Cabin without Door
- Quick Release Type Rear Hitch
- Turn Signal Lights
- Rear Combination Lights
- Battery Slide Out
- Steel Cabin Accessory option:
 - Front Windshield
 - Heater and Defroster
 - Center Rear View Mirror
 - L & R Rear View Mirrors
- Heavy Duty Welded Side Bumpers
- Left & Right Rear View Mirrors
- Turn Signal Lights
- Rear Combination Lights
- Bolt-On Front & Rear Bumper
- Luggage Rack
- Rear Hitch Mirror

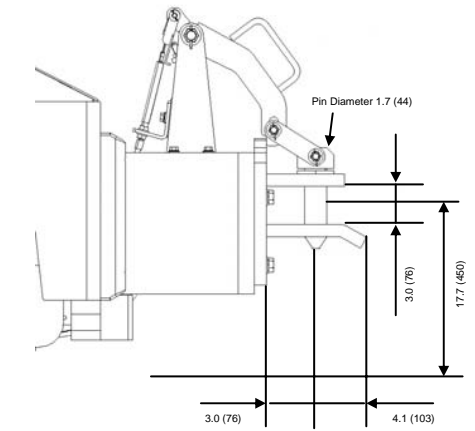
2TE15 Specifications

MAIN VEHICLE SPECIFICATIONS

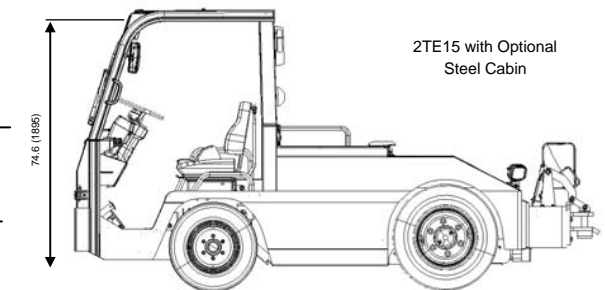
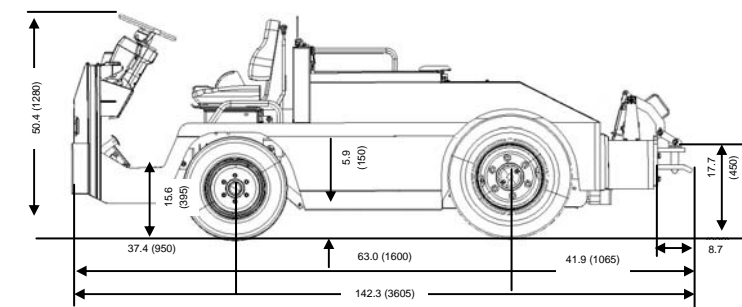
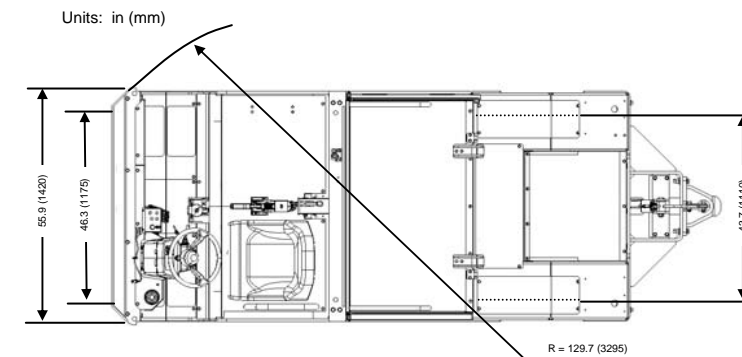
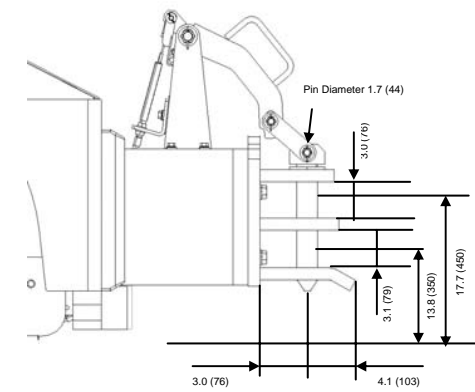
1	Manufacturer		TOYOTA
2	Model		2TE15
PERFORMANCE			
4	Travel Speed	No Load	mph (km/h)
5	Towed Weight	60-Minute Rating	lb (kg)
6	Maximum Drawbar Pull	3-Minute Rating	lbf (kgf)
7	Rated Drawbar Pull	60-Minute Rating	lbf (kgf)
DIMENSIONS			
8	Overall Length		in (mm)
9	Overall Width	w/Tow Hitch	in (mm)
10	Overall Height	w/o Cab	in (mm)
11	Drawbar Height	w/ Cab	in (mm)
12	Turning Radius (Outside)	Standard Drawbar	in (mm)
	Tire Size	Front	
		Rear	
13	Wheelbase		in (mm)
15	Tread	Front	in (mm)
16		Rear	in (mm)
17	Underclearance		in (mm)
WEIGHTS			
18	Total Weight (Without Cabin)	w/o battery	lb (kg)
19		w/ Std battery	lb (kg)
18	Weight Distribution (W/Std Battery)	Front	lb (kg)
19		Rear	lb (kg)
POWERTRAIN			
20	Drive Motor		AC Motor
21	Drive Motor Output Rating	HP / kW	15.8 / 11.8
	Control Type		Transistor Inverter
BATTERY INFORMATION			
23	Manufacturer		Exide
24	Type	min/max	40E85-11 / 40E110W-11
25	Voltage		V
26	Capacity	min/max	AH/6HR
BRAKE SYSTEM			
27	Brake Type	Front	Disc
28		Rear	Drum
29	System Type		Tandem Hydraulic
30	Electronic Regen Braking		Yes
SUSPENSION			
31	Suspension Type	Front	Spring
32		Rear	Rigid
STEERING SYSTEM			
33	Steering Type		(FHPS) Full Hydraulic Power Steering

DRAWBAR

Single Stage Pin Type Drawbar (Standard)



Double Stage Pin Type Drawbar (Option)



Ramp Degree	Ramp Grade	Level Start with One Trailer - lb (kg)	Start on Grade with One Trailer - lb (kg)
0°	0.0%	44,100 (20,000)	---
1°	1.7%	44,100 (20,000)	37,700 (17,100)
2°	3.4%	44,100 (20,000)	29,300 (13,300)
3°	5.2%	40,800 (18,500)	23,800 (10,800)
4°	6.9%	31,500 (14,300)	19,600 (8,900)
5°	8.7%	25,400 (11,500)	16,500 (7,500)
6°	10.5%	20,700 (9,400)	14,100 (6,400)
7°	12.2%	17,400 (7,900)	12,100 (5,500)
8°	14.0%	14,800 (6,700)	10,400 (4,700)
9°	15.8%	12,600 (5,700)	9,000 (4,100)
10°	17.6%	10,800 (4,900)	7,900 (3,600)

Based on dry even concrete (Coefficient of Rolling Resistance = 0.02)
Towed weight is the same for two or more trailers

(1) 2TE15 model only. 2TE18 model is not UL Compliant. Available by special order only. Please contact factory.